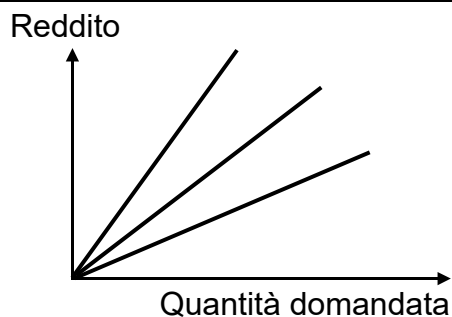


Elasticità della domanda al reddito

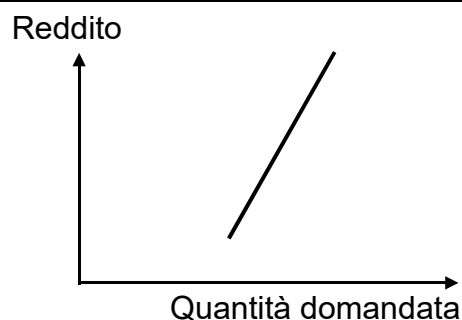
1 Elasticità della domanda al **reddito** (E) = $\frac{\text{variazione in \% della quantità domandata}}{\text{variazione in \% del reddito}}$

2 $E > 0$ (beni normali)

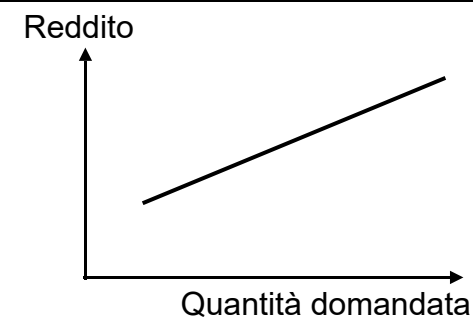
21 $E = 1$



22 $0 < E < 1$ (beni necessari)

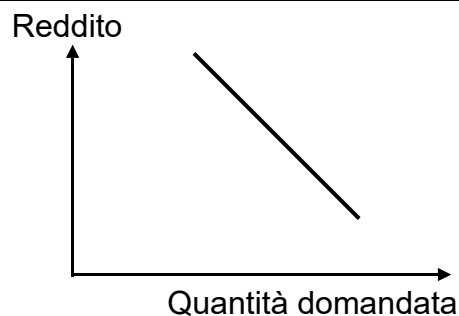


23 $E > 1$ (beni di lusso)

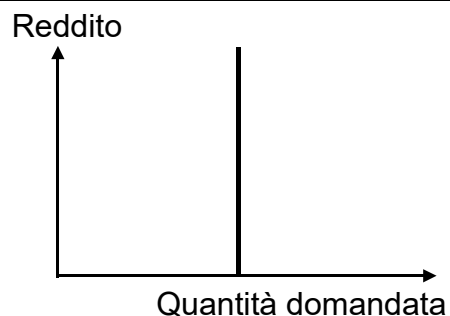


3 Casi particolari

31 $E < 0$ (beni inferiori)



32 $E = 0$



33 $E = \text{infinita}$

